

Update on Spatial Use Data to Inform Planning



Paul Gayes

*Director, School of Coastal and marine Systems Science
Coastal Carolina University*



DNR

Life's Better Outdoors

South Carolina Department of Natural Resources

Google™ Custom Search

[Site map](#) | [SCDNR Home](#)

- Buy**
- Boating
- Education
- Fishing
- Hunting
- Land
- Regulations
- Water
- Wildlife

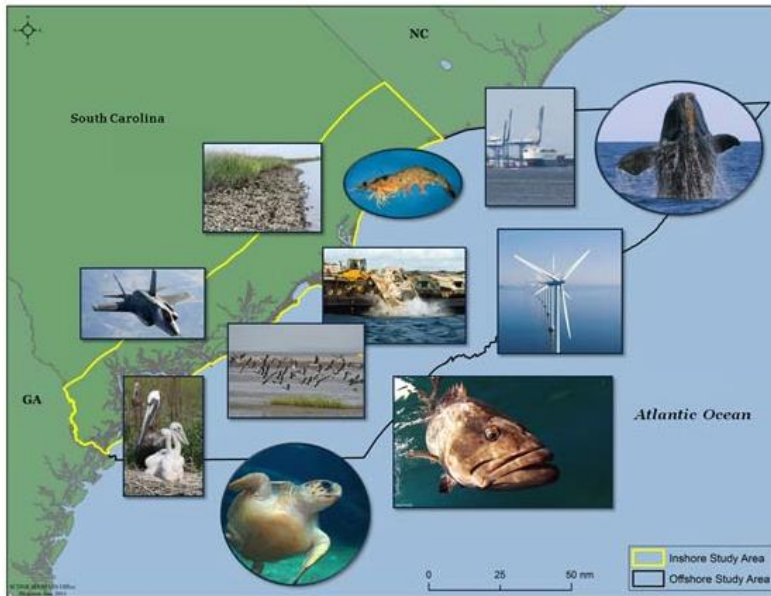
Information

- Data Resources
- Download Data
- Dynamic Maps
- Links
- Overview
- Projects
- Standards
- Wall & Printable Maps
- Contact
- GIS Homepage

GIS Data Resources

Comprehensive Spatial Database on SC's Coastal Resources and Uses

Marine Resources Division personnel have recently developed a comprehensive spatial database on South Carolina's Coastal Resources and Activities through funding from the South Carolina Energy Office.



Habitats
Biological Resources
Human Use data

<https://www.dnr.sc.gov/GIS/gisenergy.html>

Some updates to DNR report presented by Bob Van Dolah last time:

Similar effort expanded to include NC, GA, and FL.

Regional thresholds for densities so SC report still most valuable for SC BOEM initiatives.

Some uses data. E.g. VMS shrimp fishing data (figure 10)

Final Report

Comprehensive Spatial Data on Biological Resources and Uses in Southeastern Coastal Waters of the U.S.



Submitted To:

Southeast Coastal Ocean Observing Regional Association
P.O. Box 13856
Charleston, SC 29422

Submitted By:

J.B. Boynton, R.F. Van Dolah, M.D. Arendt, M.J. Reichert
South Carolina Department of Natural Resources
Marine Resources Research Institute
P.O. Box 12559
Charleston, SC 29412

2013

TNC South Atlantic Bight: Seafloor Assessment

Conservation Gateway » Conservation By Geography » North America » United States » Eastern Division » Science and Data » Marine Projects » South Atlantic Bight



South Atlantic Bight Marine Assessment



<https://www.conservationgateway.org/ConservationByGeography/NorthAmerica/UnitedStates/edc/reportsdata/marine/sabma/Pages/default.aspx>

Assessment goals

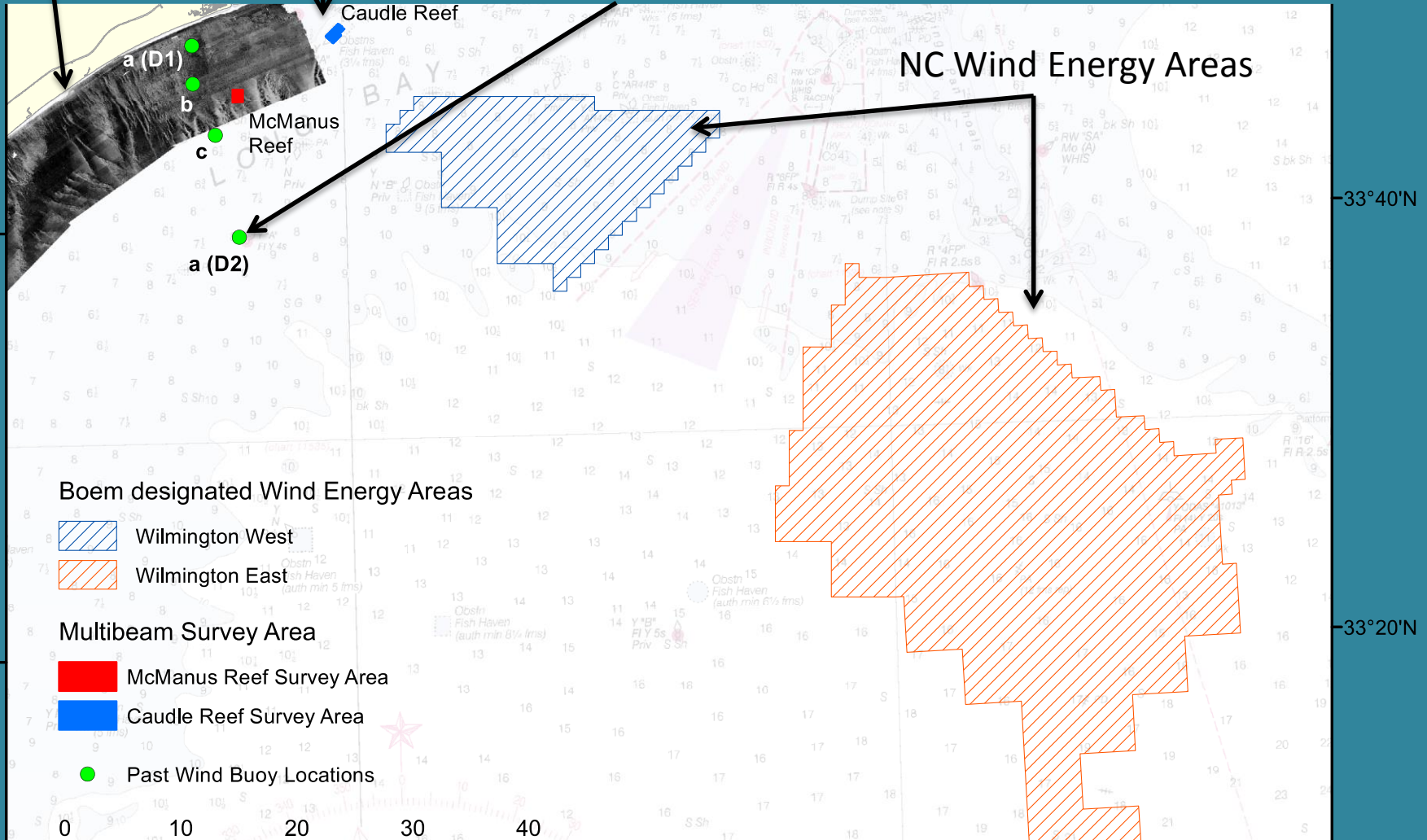
Establish publicly available biological, physical and human-use baseline data and mapping products that can be used to support ongoing coastal and marine resource management actions

Evaluate assessment information and related materials to identify areas, species and natural processes that are critical to the region's ecological integrity and resilience

Coastal Erosion Study w/ USGS Seafloor Mapping

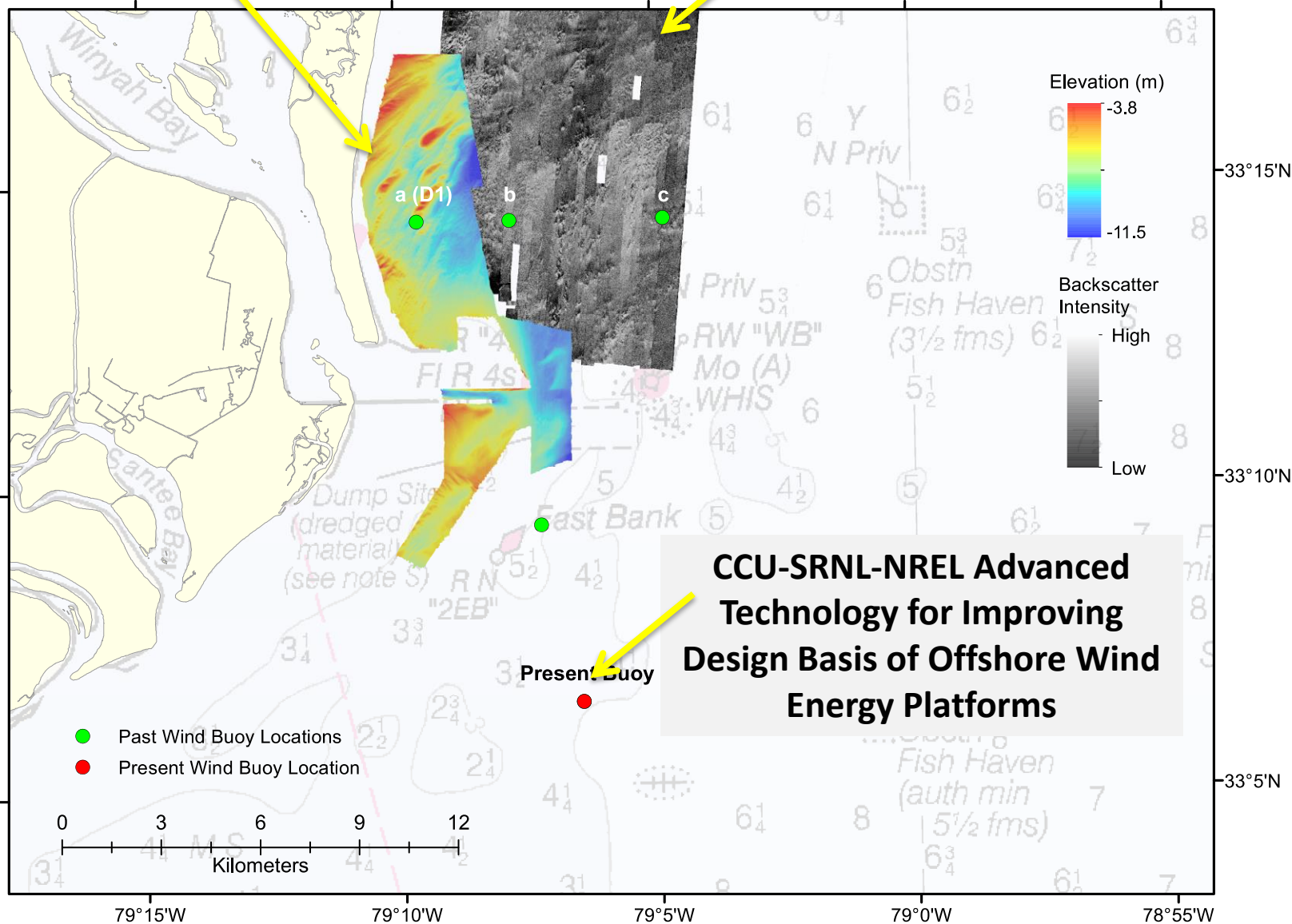
Habitat Mapping Artificial Reef areas

Hydrodynamic Studies (Wind Energy and Modeling)



CCU Multibeam Sonar - USACE Regional Sediment Management

Coastal Erosion Study w/ USGS Seafloor Mapping



BOEM Environmental Studies Program

**Fiscal Years 2014-2016
Studies Development Plan**

Atlantic OCS Region

U.S. Department of the Interior
Bureau of Ocean Energy Management
Office of Renewable Energy Programs
Herndon, VA
2013

Environmental Studies Program: Studies Development Plan FY 2014-2016

Region: Atlantic

Planning Area(s): South Atlantic

Title: Acoustic Mapping and Characterization of Sensitive
Hardground and Live Bottom Habitat on the Southeastern
US Shelf